

Social housing in Europe: the end of an era?

Noémie Houard

Although there is no single European model for social housing, there are nevertheless a number of common trends and features in most countries in Europe: delegation to local government, a new focus on fragile populations, reductions in the proportion of social housing. In France, the welfare state is tending to break with its “universalist” vocation in order to target action on increasingly vulnerable populations.

Most works and studies concerning social housing in Europe stress the diversity of approaches and concepts adopted in each country.¹ In recent years, following the economic crisis, various EU directives and a number of international factors, social housing systems have changed radically and countries have had to tune their responses in accordance with their respective histories and social-protection regimes.

The question of who constitutes the target population social housing, in particular, is at the heart of recent European decisions. Single-market and competition regulations have meant that countries where social housing is open to the whole population, such as the Netherlands or Sweden, had to revise their systems in early 2011. In France, all laws relating to social housing adopted since 2007 also have to move towards greater social specialisation in public housing, albeit for different reasons. This is the case in particular for the “DALO” (*droit au logement opposable*) law, which instituted the enforceable right to housing.

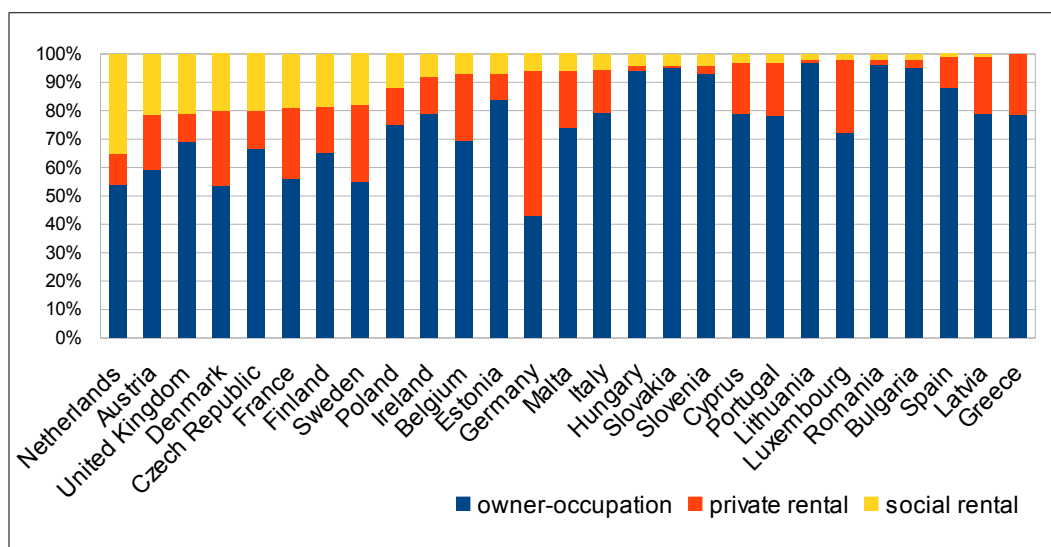
These trends raise a number of questions: is the role of social housing being refocused on those in greatest difficulty? What are the effects of decisions taken at European level? And are we seeing a convergence of social housing models in Europe?

Social housing in Europe: a variety of national situations

The term “social housing” has no common definition across Europe. Sometimes it refers to the legal status of the landlord, sometimes to the rent regime (e.g. whether or not rents are at sub-market rates), sometimes to the way it is funded, and finally, in almost all countries, to the target population. A considerable diversity of approaches are in evidence, as shown by the varying amounts of social housing (as a proportion of all housing stock) in each country: the Netherlands has a very high proportion of social housing (34%), followed by the United Kingdom (21%) and France (20%). Luxembourg and countries in Southern Europe, on the other hand, have very small stocks of social housing – less than 5% of the total – and Greece has none at all.

¹ See Ghekiere (2007), Whitehead and Scanlon (2007, 2008), FEANTSA (2008), Fitzpatrick and Stephens (2009) and Lévy-Vroelant and Tutin (2010). See also: *L'avenir du logement social : devoir d'intervention. Les vingtièmes entretiens du centre Jacques Cartier*, 4–5 December 2007; *L'avenir du logement social en Europe*, GIS Socio-économie de l'habitat/ENHR, 22–23 November 2007; *Housing: the next 20 years*, King's College, Cambridge, 16–17 September 2010; *Loger l'Europe*, Sciences Po/Délégation interministérielle à l'Hébergement et à l'accès au logement (DiHAL)/Centre d'analyse stratégique, Paris, 20 January 2011.

Segmentation of housing stock in the 27 EU member states



Source: CECODHAS Housing Europe (European Federation of Public, Cooperative & Social Housing), 2007.

A similarly diverse range of situations exists regarding the allocation of social housing, with national approaches being more or less finely targeted. Laurent Ghekiere identifies three models: “universal”, “generalist” and “residual” or targeted.² In certain countries, social housing is theoretically accessible to all (Sweden; Netherlands until 1 January 2011). In France and Germany, social housing is open to a broad section of the population, but access is means-tested and restricted by priority-related criteria. Elsewhere, social housing is primarily intended for those who cannot afford housing via other routes (United Kingdom, Ireland, Hungary).

A growing focus on vulnerable populations

If we look beyond these variations, an overall trend can nonetheless be observed in Europe, namely that social housing is increasingly concentrated on the most vulnerable populations (Lévy-Vroelant 2011). Sometimes this shift takes place at national level, sometimes more locally, at the level of individual housing complexes and estates. In these cases, the trend can be explained by the economic crisis. It may also be linked to national decisions, such as the “right to buy” scheme³ implemented in the UK, which, while benefiting those able to buy their home, has led to increased impoverishment and segregation for those who cannot.

However, in certain countries with a “universalist” tradition, this change is, in part, the result of a convergence process in Europe. This process was triggered by decisions that have been made following instances of distortion of competition observed by the European Commission, even though the Commission’s remit does not include housing. In this connection, two cases have already had a real impact on the role of social housing: in the Netherlands, a maximum income limit of €33,000 per household per annum has been introduced (with the effect that now only 41% of the population are eligible for social housing⁴). Sweden preferred instead to open up all public housing

² Laurent Ghekiere (2008), permanent representative of the USH (Union Sociale pour l’Habitat – Union for Social Housing) to the EU in Brussels.

³ This scheme gives social-housing tenants the legal right to purchase their home from the social landlord. Some 1.6 million social-housing units were sold between 1979 and 2006. The United Kingdom currently has almost 4 million social-housing units.

⁴ Decision of the European Commission in December 2009 approving the modifications of the social-housing system in the Netherlands proposed by the government (Whitehead 2011).

to the market rather than comply with the conditions imposed by the Commission in exchange for the provision of government aid.⁵

With regard to housing construction, a number of countries have been keen to increase the amount of social-housing units on offer in the last 10 years. Austria has proved particularly effective in this regard. In the UK, Tony Blair's government set an objective of 200,000 new housing units (public and private) to be built annually and doubled social-housing production, from 15,000 to 30,000 per year. In France, social-housing construction reached record levels thanks to the Plan de Cohésion Sociale (Social Cohesion Plan), progressing from 40,000 social-housing units financed in 2000 to more than 130,000 units in 2010.

Nevertheless, in most EU countries, the social rental sector has decreased as a proportion of all housing: social-housing construction has not kept up with the overall housing production rate, and many social-housing units have been either demolished or privatised (Scanlon and Whitehead 2010, p. 19). As far as the sale of social housing is concerned, the UK has clearly been the front runner with its right-to-buy scheme, which has led to the sale of more than 1.6 million housing units since 1979. Certain other countries also went down this path in the 1990s, such as the Netherlands. Others, such as Denmark or France,⁶ are just starting to experiment with this concept. Lastly, in Germany, private-sector housing has long been the norm, as social housing is only "social" for a limited period, with some 100,000 units passing into the private housing sector annually.

The French system: an unhappy medium?

Some figures relating to social housing in France

Total stock: 4.5 million units as of 1 Jan. 2010 (*of which 26% in the Paris region*)

Production: 131,509 units financed in 2010 (*of which 32% in the Paris region*)

Demand: 1.2 million households in 2010 (including 550,000 requests from households that are already social-housing tenants)

Allocations: 420,000 per year (*of which 20% in the Paris region*)

Situation regarding the "DALO" law at year-end 2010

Housing appeals filed: 185,000 (*of which 60% in the Paris region*)

Housing appeals reviewed: 143,665

Households considered priority cases for housing: 57,561

Households rehoused as a direct or indirect result of the "DALO" law: 35,000

Judgements against the French state for failing to provide suitable proposals within the deadlines laid down by the law: 5,585

Sources: MEEDDM⁷, USH, Conseil d'État [French Council of State]

⁵ In Sweden, the authorities never use the term "social housing", deemed to be stigmatizing, and instead prefer the concept of "public housing", which refers to rental housing managed by municipal housing companies. For further information, see Ghekiere 2011.

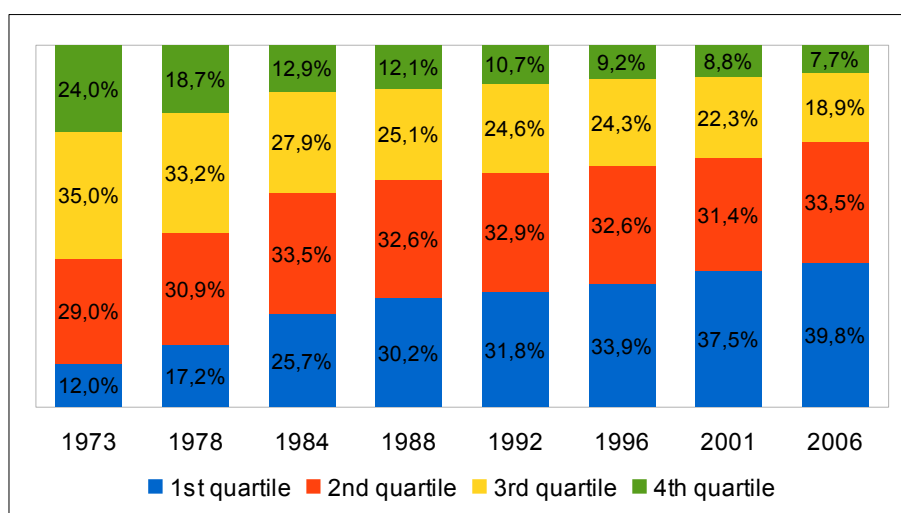
⁶ An agreement was reached between the USH and the French government in December 2007. The measure implemented differs from the British right-to-buy scheme, as it is HLM (social housing) bodies that decide which housing units are to be put up for sale. Only 4,900 housing units were sold in 2007, and around 6,000 were sold in 2008. In its 2012 election manifesto, the conservative UMP party announced its intention to introduce a "right to purchase" social housing, based on the British right-to-buy scheme.

⁷ MEEDDM: former Ministry for Ecology, Energy, Sustainable Development and the Sea, replaced in November 2010 by MEDDTL (Ministry for Ecology, Sustainable Development, Transport and Housing) and in May 2012 by MEDDE (Ministry for Ecology, Sustainable Development and Energy).

In many regards, France occupies an intermediate position.

- With social housing representing 20% of the total housing stock, France lies midway between the Netherlands (35%) and the southern European countries (5%). This situation has not changed in recent years, as the experimental sale of housing stock initiated in 2007 has occurred at a period of historically high social-housing production. Urban renewal, which is now a key element of social-housing policy, is an emblematic illustration of the resistance of the French model to “residualisation”.
- France’s “generalist” approach places it midway between the very specific British concept of social housing and the universalist Swedish tradition. In theory, therefore, the social vocation of low-cost housing (known as *HLM* or *habitations à loyer modéré*) in France is quite broad, as the income ceilings in place mean that two thirds of households may be eligible. Nevertheless, if the socio-economic profile of the tenants is taken into consideration, it can be seen that the proportion of disadvantaged households placed in social housing has increased continuously since the late 1970s, particularly in large social-housing estates (Laferrère 2009). In this respect, national policy since 2007 has shown a willingness to continue this trend, as evidenced by the “DALO” law of 5 March 2007 or the law of 25 March 2009 promoting action on housing and against exclusion, which reduced income ceilings by 10%, introduced rent supplements in areas of high demand, and partially reviewed the notion of security of tenure.⁸

Income distribution of social-housing tenants between 1973 and 2006



Source: INSEE,⁹ analysis by the USH.

- Finally, while the general trend in Europe is to delegate competencies to local authorities – particularly in the Netherlands, Germany and the UK – the decentralisation process in France is something of an unhappy medium: on the one hand, there is a movement towards the territorialisation and contractualisation of political decisions; but, on the other, there has also been a recentralisation of public action (Epstein 2008). National policy thus tends to reaffirm the role of central government in the territorial distribution of construction objectives and the definition of target populations for social housing, while it is at local level

⁸ See the many regulations introduced since the circular of 16 September 2009 relating to access to housing for people in emergency accommodation, up to and including the decree of 15 February 2011 relating to the allocation procedure for social housing and the enforceable right to housing.

⁹ French National Institute of Statistics and Economic Studies.

that strategic trends are actually played out in terms of the construction and allocation of social housing via social-housing bodies and local councillors.

This situation leads to a reinforcement of inequalities between territories. In areas of high demand, housing supply is particularly inadequate in view of the number of housing requests. Similarly, construction in the social rental sector always has difficulty making sufficient progress in those areas where supply is lowest.¹⁰

Conclusion

Although there exists no single European model for social housing, the social housing stock in Europe nonetheless tends to accommodate more and more vulnerable populations, and is seen as an increasingly residual part of housing policies in most EU member states. The direction that social housing should take and whom its target should be are questions that are more open-ended than ever.

In 2012, debate in Europe on the matter is likely to still be fuelled by the eagerly awaited ruling from the Court of Justice of the European Union concerning the role and duties of social-housing structures. The Dutch debate continues between the European Commission, the Dutch government, private investors and social landlords.¹¹ The outcomes of these two debates will show whether the economic crisis – which has upset the economic, social and political balance in Europe – has led to a reversal of the trends observed in the first decade of the 21st century.

Bibliography

- Conseil d'État. 2009. *Droit au logement. Droit du logement*, Paris: La Documentation Française.
- Epstein, R. 2008. "L'éphémère retour des villes. L'autonomie locale à l'épreuve des recompositions de l'État", *Esprit*.
- Europolitique*. 2011. "L'Europe redessine le logement social", no. 4328, 16 December 2011.
- Fédération européenne des associations nationales travaillant avec les sans-abri. 2008. *Le rôle du logement dans les parcours d'exclusion liés au logement*, European report.
- Fitzpatrick, S. and Stephens, M. 2009. "The Future of Social Housing", *European Journal of Homelessness*, vol. 3, December, pp. 347–351.
- Fondation Abbé Pierre. 2012. *L'état du mal-logement en France, 17^e rapport annuel*.
- Ghekiere, L. 2007. *Le développement du logement social dans l'Union européenne. Quand l'intérêt général rencontre l'intérêt communautaire*, Dexia; Collège d'Europe.
- Ghekiere, L. 2008. "Le développement du logement social dans l'Union européenne", *Recherches et Prévisions*, no. 94, December, pp. 21–34.

¹⁰ Although many towns have exceeded the objectives laid down by the SRU (Urban Solidarity and Renewal) law of 2000, which imposes a minimum of 20% social housing in certain municipalities (broadly speaking, towns with at least 3,500 inhabitants that form part of a wider urban area of at least 50,000 inhabitants, and towns in Greater Paris with more than 1,500 inhabitants), over a third of the municipalities affected still have not achieved this goal. In 2008–2010, 940 municipalities were concerned by this regulation: 591 have achieved the objective set, while 349 are still failing, to a greater or lesser extent (Fondation Abbé Pierre 2012, p. 160).

¹¹ The European debate on the nature of specific tasks assigned to social-housing organisations by member states was raised by Dutch social landlords for arbitration before the judges of the Court of Justice of the European Union (Case T202-10). In early 2012, the Court rejected the Dutch social landlords' case; they are now appealing this decision. With regard to the Dutch income ceiling, which stands at €33,000, it is currently the subject of negotiations between the Dutch government, the social landlords and the European Commission: as a result, this ceiling could be raised and/or opened to regional variations.

- Ghekiere, L. 2011. “Évolution du sens du logement social à l’épreuve de la crise et du droit communautaire et de la concurrence”, in Houard (dir.), *Loger l’Europe. Le logement social dans tous ses États*, Paris: La Documentation Française; MEDDTL–DiHAL.
- Houard, N. (dir.). 2011a. *Loger l’Europe. Le logement social dans tous ses États*, Paris: La Documentation Française; MEDDTL–DiHAL.
- Houard, N. (dir.). 2011b. *Social Housing across Europe*, Paris: La Documentation Française; MEDDTL–DiHAL.
- Laferrère, A. 2009. *La paupérisation du parc HLM : essai de vision dynamique*, Paris: INSEE.
- Le Galès, P. 2010. “Exploring governance in a multilevel polity: a policy instruments approach” (with Hussein Kassim), *West European Politics*, vol. 33, no. 1, pp. 1–21.
- Lévy-Vroelant, C. 2011. “Le *welfare* vu du logement : logement social et État-providence en question”, in Houard (dir.), *Loger l’Europe. Le logement social dans tous ses États*, Paris: La Documentation Française; MEDDTL–DiHAL.
- Levy-Vroelant, C. and Tutin, C. (dir.). 2010. *Le logement social en Europe au début du xx^e siècle*, Rennes: Presses Universitaires de Rennes.
- Regards croisés sur l’économie*. 2011. “Pour sortir de la crise du logement” [series of articles], no. 9, Paris: La Découverte.
- Scanlon, K. and Whitehead, C. 2010. “Le logement social en Europe : tendances communes et diversités persistantes”, in Lévy-Vroelant, C. and Tutin, C. (dir.). 2010. *Le logement social en Europe au début du xx^e siècle*, Rennes: Presses Universitaires de Rennes.
- Whitehead, C. 2011. “Un regard étranger sur le modèle français”, in Houard (dir.), *Loger l’Europe. Le logement social dans tous ses États*, Paris: La Documentation Française; MEDDTL–DiHAL.
- Whitehead, C. and Scanlon, K. (dir.). 2007. *Social Housing in Europe*, London: London School of Economics.
- Whitehead, C. and Scanlon, K. (dir.). 2008. *Social Housing in Europe II. A review of policies and outcomes*, London: London School of Economics.

Noémie Houard graduated as an engineer from the École Nationale des Travaux Publics de l’État (French National School of State Public Works) and holds a doctorate in political science from Sciences Po (the Paris Institute of Political Studies). After completing her thesis in affiliation with the Haut Comité pour le Logement des Personnes Défavorisées (High-Level Committee on the Housing of Disadvantaged Persons), she was appointed policy officer under the aegis of the prefect and interministerial delegate for accommodation and access to housing for the homeless and inadequately housed, from 2008 to 2010. She is currently policy officer at the Centre d’Analyse Stratégique (French Centre for Strategic Analysis) and associate researcher at CEVIPOF (Sciences Po’s centre for political research).

She is the author of *Droit au logement et mixité. Les contradictions du logement social* (L’Harmattan, 2009) and coordinated *Loger l’Europe. Le logement social dans tous ses États* (La Documentation Française, 2011). Her work mainly concerns housing policy, urban policy and discrimination.

To quote this article:

Noémie Houard, translated by Oliver Waine, “Social housing in Europe: the end of an era?”, *Metropolitiques*, 26 September 2012. URL: <http://www.metropolitiques.eu/Social-housing-in-Europe-the-end.html>.